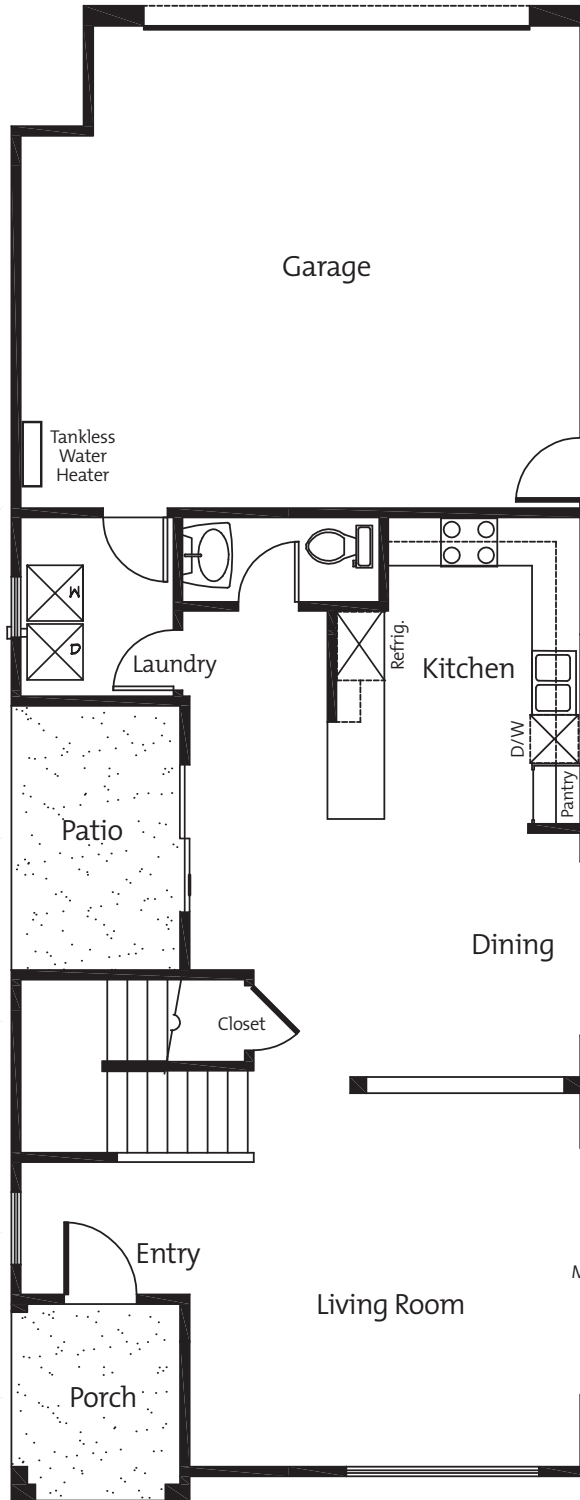




**RIVER ROAD VILLAGE**  
BY MONTAGE DEVELOPMENT AND THE RENAISSANCE COMMUNITY FUND

**Plan 14**  
**4 BR/2.5 BA/Loft**  
**1st Floor**

In a continuing effort to improve home design, the builder reserves the right to change floor plans, elevations, specifications and pricing without notice. All floor plans are for illustrative purposes and are not to scale. All maps, plans and elevation renderings are artists' conception and are not to scale. Landscaping and hardscape are not included. All square footage is approximate. Fencing and walls vary according to the size and location of the lots. Furniture, decorations, and drapes are not included.



Energy-efficient tankless water heater

Outdoor, private covered side-yard patio area

Extra storage under the stairs!

Tile floor in entry

Covered front porch entry

Guess what? This house has fiber-optic connections!

2-10 HBW® New Home warranty

- Look at all these standard features in your kitchen:
- Stainless steel range
  - Stainless steel 1.5 cu ft microwave/hood
  - Energy Star® compliant stainless steel dishwasher
  - Granite slab countertops and backsplash
  - Spacious pantry
  - Maple cabinets with knobs
  - Tile flooring
  - Pull-out spout in sink
  - Undermount stainless steel sink

Perfect for family get-togethers

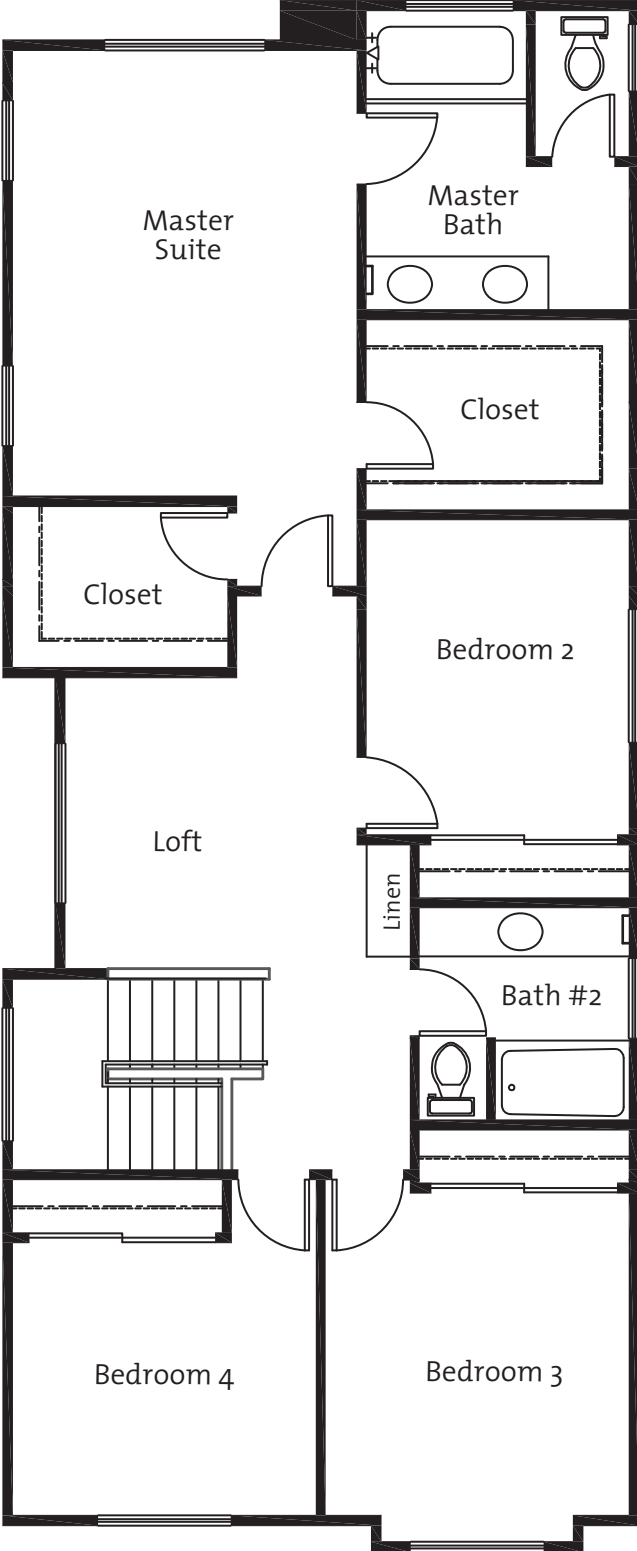
Extra high 9-foot ceilings

Built-in media niche

# Plan 14, 4 BR/2.5 BA/Loft 2nd Floor

Huge master bedroom to escape it all

Enormous walk-in double-pole closet



Undermount his & hers sinks

Huge 2nd master closet

Solid surface countertops with undermount sink

Light, bright, and airy bedrooms