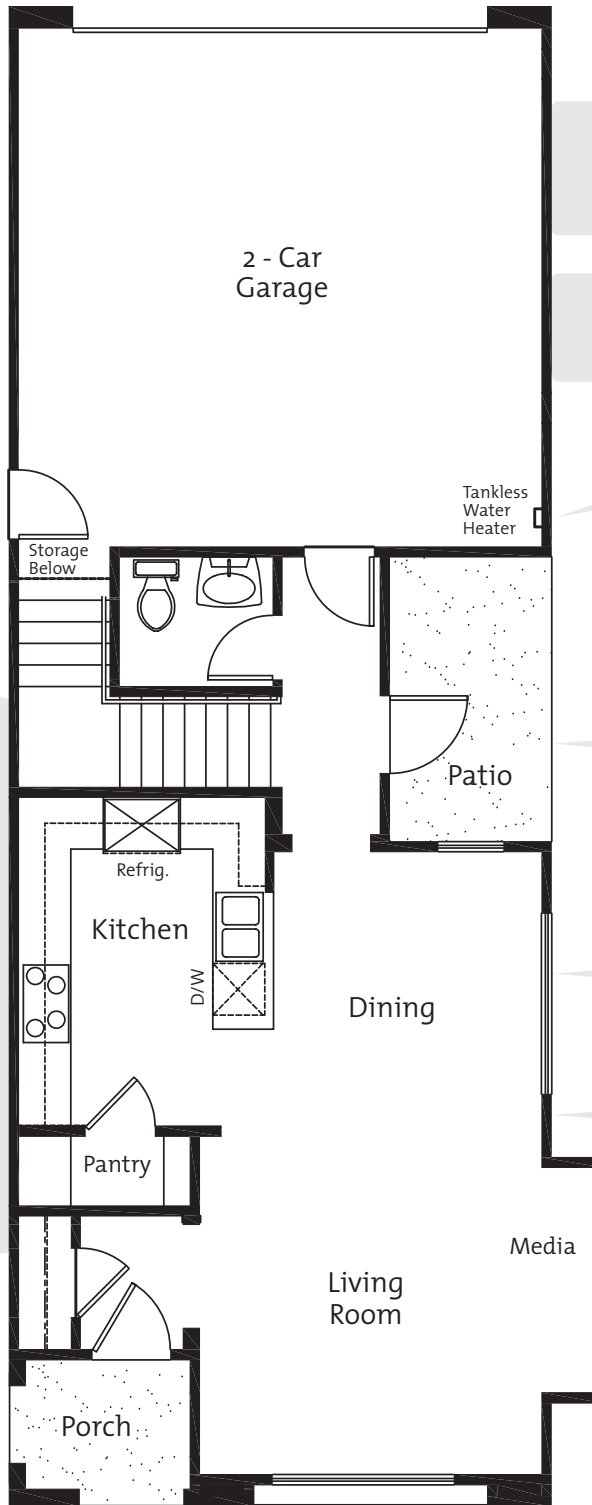




RIVER ROAD VILLAGE
BY MONTAGE DEVELOPMENT AND THE RENAISSANCE COMMUNITY FUND

Plan 12, 3 BR/2.5 BA
1st Floor

In a continuing effort to improve home design, the builder reserves the right to change floor plans, elevations, specifications and pricing without notice. All floor plans are for illustrative purposes and are not to scale. All maps, plans and elevation renderings are artists' conception and are not to scale. Landscaping and hardscape are not included. All square footage is approximate. Fencing and walls vary according to the size and location of the lots. Furniture, decorations, and drapes are not included.



More storage under the stairs!

- Look at all these standard features in your kitchen:
- Stainless steel range
 - Stainless steel 1.5 cu ft microwave/hood
 - Energy Star® compliant stainless steel dishwasher
 - Granite slab countertops and backsplash
 - Spacious walk-in pantry
 - Maple cabinets with knobs
 - Tile flooring
 - Pull-out spout in sink
 - Undermount stainless steel sink

Large coat closet

Covered front porch entry

This house has fiber-optic connections! Ready to go!

2-10 HBW® New Home warranty

Energy-efficient tankless water heater

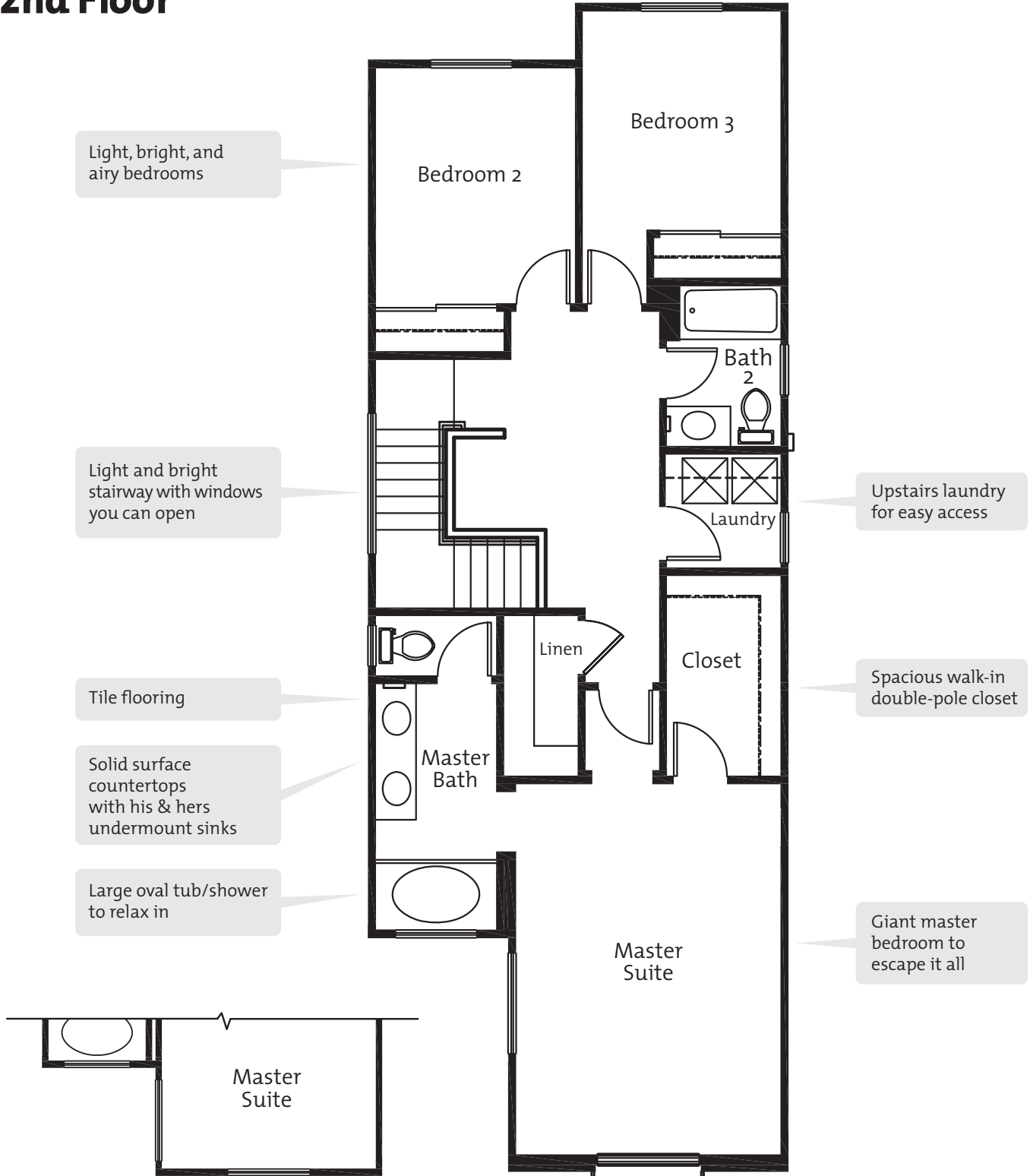
Covered side-yard patio area

Perfect for family get-togethers

Extra high 9-foot ceilings

Enormous built-in media niche

Plan 12, 3 BR/2.5 BA 2nd Floor



Light, bright, and airy bedrooms

Light and bright stairway with windows you can open

Tile flooring

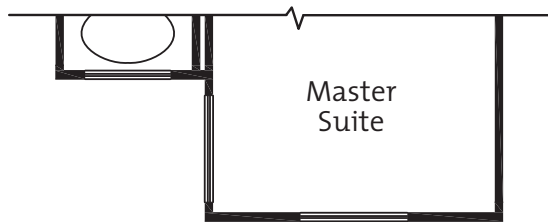
Solid surface countertops with his & hers undermount sinks

Large oval tub/shower to relax in

Upstairs laundry for easy access

Spacious walk-in double-pole closet

Giant master bedroom to escape it all



Elevation C